



Rear Brush Linkage Upgrade Kit

Model: S9, Scout 9 Sweeper



The kit includes the necessary parts to eliminate rear brush linkage rattling sound. The new link arms are now equipped with plastic bushings. Carefully follow the installation instructions as described below.

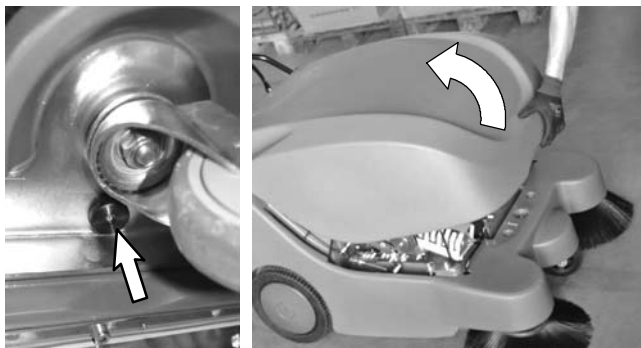
INSTALLATION INSTRUCTIONS:

Installation Time: 45 minutes

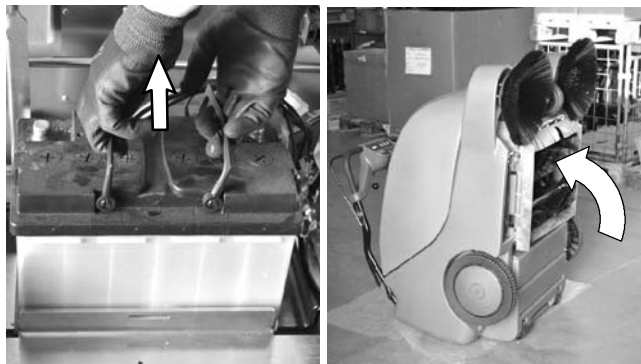
Tools Required: 2mm and 5mm Hex Tool, Flat screw driver, 10mm and 13mm socket wrench, and 12mm socket and hammer to install push nuts.

FOR SAFETY: Before servicing machine, park on level surface and turn off machine.

1. Loosen the hood lock knob near front caster and open hood.



2. Remove battery from machine and carefully tilt the machine back as shown. Be careful not to damage the yellow shaker knob at rear of machine.



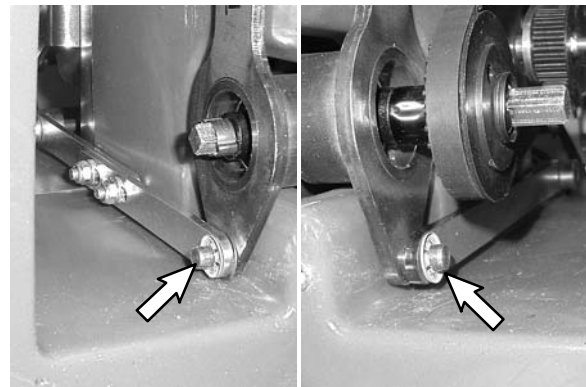
3. Remove the left and right hand bottom covers to access the rear brush linkage.



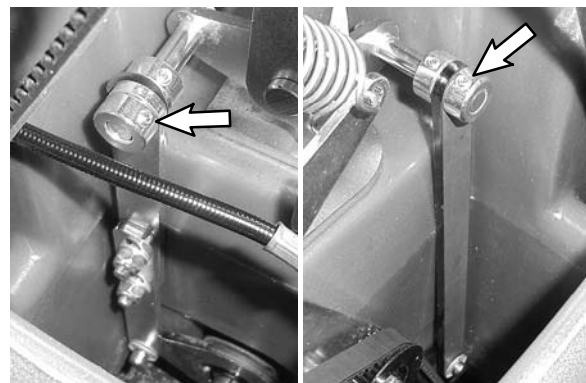
9013049 Kit Contents

Ref	Description	Qty.
1	RH Link Top w/ flange bushing	1
2	RH Link Bottom w/ flange bushing	1
3	LH Link w/ flange bushing	1
4	6mm Push Nut	2
5	M6 Flat Washer	2
6	M6 Nyloc Nut	2

4. Remove the push nuts from the left and right link arms. Use a flat screwdriver to pry off nuts.



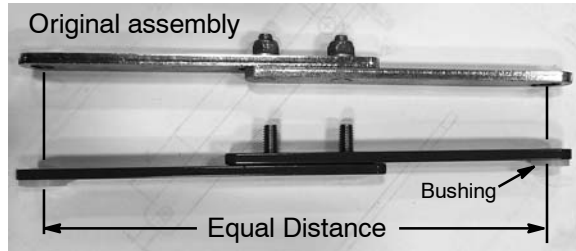
5. Loosen the two shaft collar set screws that retain the link arms at top. Remove link arms from machine. *NOTE: Do not disassemble the two-piece link arm assembly as you will need to use it as a gage described in step 6.*



Rear Brush Linkage Upgrade Kit INSTALLATION INSTRUCTIONS - Continued

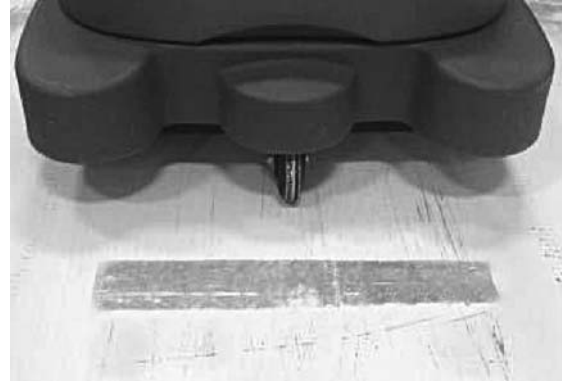
6. Using the original two-piece link arm assembly as a gage, fasten the new link arms together at the same distance as shown below.

NOTE: You may need to do a final adjustment after the kit is installed to ensure the rear brush is horizontally balanced from left to right as described in step 10.

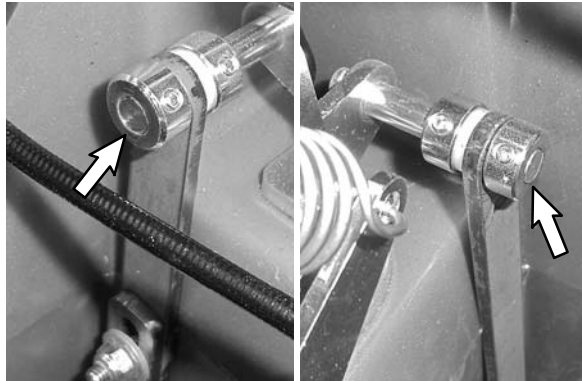


Nuts and washers
supplied with kit

10. Test machine for proper operation. Ensure the rear brush is balanced horizontally. This can be achieved by applying a chalk dust on the floor to verify a rectangular brush pattern as shown. Re-adjust the two-piece link arm assembly if brush pattern is not rectangular. Refer to step 6.



7. Install the new link arms on machine as shown. Flanges facing inward. Use the new push nuts to retain the bottom connection. Position the shaft collars at the top connection so they are flush with end of shaft as shown.



8. Re-install the right and left bottom covers.
9. Tilt the machine upright and re-install the battery. Secure hood with lock knob.